

# Battery—Powered Disinfection Sprayer in a Suitcase

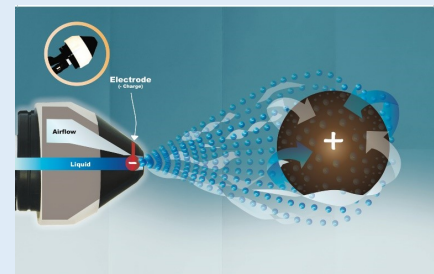
# SC-MB PATENT PENDING



For disinfecting schools, hospitals, nursing homes, and public facilities. Self-contained “suitcase-style” sprayer on four wheels for easy mobility. Equipped with detachable liquid one-liter nalgene bottle, which can be attached on a hip belt, or mounted on back of suitcase.



Nozzles	1
Air Supply	Air supply included, with improved “sidewall” air hose quick connection
Battery Type	24 volt battery, with top mounted “on/off” switch for easy access
Battery Run Time	1 1/2 hours
Droplet Size	40 micron VMD
Liquid Container Type	1 one-liter nalgene bottle
Dimensions	22"H x 16"W x 10"D (56 cm x 41 cm x 25 cm)
Hose Length	6 to 8 feet
Weight	48 lbs
Flow rate	80 ml per minute
Spray Range	5-7 feet
Additional Options	Holster & carabiner (optional) Stainless steel connections (optional)



**Electrostatics mean better  
spray coverage!**



**919.623.7903**

info@missionhousemicrobial.com  
www.missionhousemicrobial.com