

Backpack Sprayer

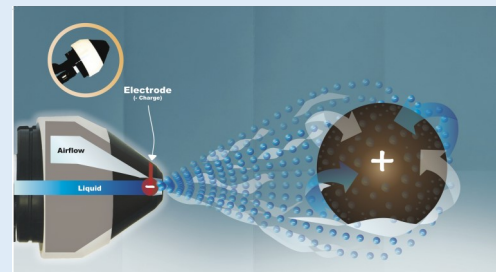
(compressor not included)

BP



Nozzles	1 included, see below for more options
External Air supply	Yes, (compressor not included)
CFM Required	1 nozzle 6-8 CFM (0.17-0.23 m ³ /min) 2 nozzle 12-16 CFM (0.34-0.45 m ³ /min) 3 nozzle 18-24 CFM (0.51-0.68 m ³ /min)
Air line pressure	60 to 70 PSI (4.2 to 4.9 kg/cm ²)
Electricity Required	No
Liquid Container Type	2.5 or 4 gal. (9.5 L or 15.1 L)
Dimensions	40"H x 22"W x 42"L (1 m x 0.6 m x 1.1 m)
Hose Length	100 ft (30.5 m) air hose, standard, 300 ft (91.4 m) maximum available upon request
Weight	Empty, 7 lbs (3.2 kg) full 42 lbs. (19.1kg)
Flow rate	1 nozzle - 2-2.5 gal/hr (7.6-9.5 L/hr) 2 nozzle - 4-4.5 gal/hr. (15-17 L/hr) 3 nozzle - 5.5-6 gal/hr. (20.8-22.7 L/hr)
Spray Range	15-20 feet range (4.6-6.1 m)
Additional Options	2 and 3 headed spraygun

Ideal sprayer for emergency vehicles, public transportation, halls, sanctuaries, classrooms, lobbies, waiting areas, etc.



Complete Confident Coverage



919.623.7903

info@missionhousemicrobial.com
www.missionhousemicrobial.com